

St Ann's Crescent - a lovely house, London, Wandsworth

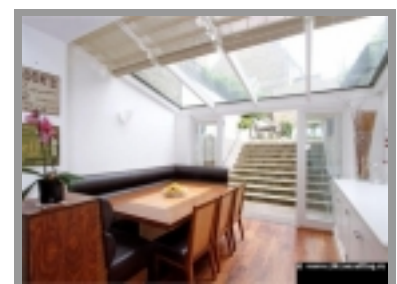
Unique 5-bedroom house with good size garden in a beautiful place.

It is very popular area with pleasant and quiet streets and lovely houses with gardens. There are schools, kindergardens, both private and public, educational and leisure centres. Nice small parks in this area will be perfect places for walking. Many restaurants and cafes with wonderful services, bars and traditional English pubs. Stores, shopping centers and local shops with essential goods are close to the house. Health center nearby as well which is also important. The River Thames in an accessible distance from the house with superb places for picnic.

This elegant home has been beautifully renovated. It offers original high ceilings decorated in neutral tones, four floors and will be an ideal family house.

- ID: **592**
- Country: **United Kingdom**
- Region: **London**
- Number of rooms: **6**
- Price: **£1975000**

 **Rent**




- On the ground floor you can see two levels. On the upper level there is large and bright living room with doors leading to the garden. On the lower level there is a family room, room for entertainment, modern kitchen and dining room which has direct access to the wonderful garden as well. The kitchen is full furnished with a luxurious goods. The dining room has partially glazed roof which allows you to enjoy not only the natural light but also views of a gorgeous garden which has two levels as well.
- On the first floor you will find a spacious bedroom with fitted wardrobes, luxurious bathrooms with heated floors.
- The second floor is ideal for children. Three double bedrooms and a family bathroom, room for study or office, which can also be used as a library.
- On the third floor there is a large double bedroom with en suite bathroom and a storeroom.

Specifications:


- Kitchen / dining room
- Three living rooms



www.UKconsulting.ru

 +7 (495)-649-6922

info@ukconsulting.ru

 +44 7853-137-137

Three bathrooms

- WC
- Garden

Great house for a large family. Perfect for living and for rental purposes.

Several types of transport at your disposal. The nearest metro station Wandsworth. Taxi as an alternative for any occasion.



«DOM-INFO LTD», 145 - 157 St John St, EC1V 4PY, London, United Kingdom reg. N 06922947

© www.UKconsulting.ru – Independent Consulting Group: England, Russia, CIS, EU, USA, ASIA